

Lasting Connections

## INVERTERS FOR ARC WELDING

### TERRA & URANOS





## LASTING CONNECTIONS

As a pioneer in innovative welding consumables, Böhler Welding offers a globally unique range of products for joint welding. More than 2,000 products are being adapted continuously to the current industry specifications and customer requirements, certified by well-respected institutes and thus approved for the most demanding welding applications.

**"Lasting Connections" is the brand philosophy, both for welding and on a human level - as a reliable partner for the customer.**

# TERRA & URANOS – THE NEW REFERENCE IN WELDING MACHINES.

You've taken on the challenge of joining materials made of metal. You know how to weld structures for bridges, machines and power stations. In your job you don't need "one" solution, you deserve the best.

As a provider of welding solutions, we offer a unique portfolio of high-quality welding consumables, application services, accessories and welding equipment. With the Terra & Uranos ranges, we are setting new standards in all

standard and special welding processes. The combination of welding filler metal and power source, which is unique in the industry and based on our application know-how, takes precision to a new dimension.

This allows you to obtain TOP CLASS welded joints that you will be proud of. This is what we stand for - with up to 5 years warranty on all Terra & Uranos welding equipment.

## Advantages for our customers:

- » Böhler Welding combines metallurgical know-how, technical competence and a complete product range like no other supplier on the market.
- » Welding consumable and welding machine meet in a perfect synergy for all customers of Böhler Welding.
- » Optimised performance curves lead to first-class welding results.
- » Böhler welding machines made in Europe guarantee the highest quality of products and services.
- » We stand by our quality promise and provide up to 5 years warranty.
- » Our customers can always rely on a trusting partnership and lasting relationships.

## ONE INVERTER TECHNOLOGY TWO PRODUCT RANGES

The key component of our welding power sources is the patented Multiline Three Level® Inverter.

This modern and technically advanced inverter offers unbeatable long run performance and reliability. Customers particularly appreciate those advantages when it comes to arc control, adaptability to different processes and applications, accuracy and repeatability.





## MIG/MAG STANDARD

### Designed for amazing welding performance

- » Particularly efficient MIG/MAG standard process for extremely precise welds
- » Enables very homogeneous and clean metallurgical properties
- » Very stable and perfectly controllable electric arc
- » High welding speed and melting capacity



### TERRA 320 SMC

320 A @ 45%  
3 x 400 V  
3 – 320 A  
33.0 kg



### TERRA 320 MSE

320 A @ 50%  
3 x 400 V  
3 – 320 A  
20.2 kg

## MIG/MAG PULSE

### Perfect welding results thanks to “Digital Drop”

- » Enables optimum MIG/MAG pulse welding with consistent and reproducible performance thanks to new welding technology
- » Extremely stable and concentrated arc
- » Simple parameter control for efficient work



## MULTIPROCESS

### Up to any welding task

- » Ideal for MMA, MIG/MAG pulse and TIG DC welding process
- » Designed to handle a wide range of welding tasks
- » Developed to meet the highest demands with regard to flexibility and performance
- » Perfect for repair and maintenance as well as training facilities



## TIG DC

### The precision arc

- » Highly concentrated and stable electric arc
- » Aesthetically perfect welding seams
- » Optimum welding conditions in all working situations



### TERRA 180 TLH

170 A @ 45%  
1 x 230 V  
3 – 170 A  
8.4 kg

## TIG AC/DC

### Best in class

- » Guaranteed concentrated and stable arc
- » Reduced heat input
- » High-quality weld seam and considerable increase in productivity with only one set value



## MMA

### Light and flexible

- » Very compact and powerful inverter
- » Suitable for cellulose
- » Intuitive operation
- » Generator safe



### TERRA 150

150 A @ 35%  
1 x 230 V  
5 – 150 A  
4.1 kg



### TERRA 180

170 A @ 35%  
1 x 230 V  
3 – 170 A  
8.0 kg

# FOR STANDARD WELDING TASKS

Robust and user-friendly

# URANOS



**TERRA 400 MSE**  
 400 A @ 50%  
 3 x 400 V  
 3 – 400 A  
 22.5 kg



**TERRA 500 MSE**  
 500 A @ 50%  
 3 x 400 V  
 3 – 500 A  
 27.3 kg



MIG/MAG

**URANOS 2000 SMC**  
 200 A @ 35%  
 1 x 230 V  
 5 – 200 A  
 12.8 kg

MIG/MAG PULSE



**URANOS 2700 PMC**  
 270 A @ 45%  
 3 x 230 - 400 V  
 3 – 270 A  
 23.0 kg

MULTIPROCESS



**URANOS 2700 MTE**  
 270 A @ 45%  
 3 x 230 - 400 V  
 3 – 270 A  
 23.5 kg



**TERRA 270 TLH**  
 270 A @ 60%  
 3 x 400 V  
 3 – 270 A  
 16.1 kg



**TERRA 320 TLH**  
 320 A @ 60%  
 3 x 400 V  
 3 – 320 A  
 20.5 kg

TIG DC



**URANOS 2200 TLH**  
 220 A @ 35%  
 1 x 115-230 V  
 3 – 220 A  
 16.0 kg

TIG AC/DC



**URANOS 1700 AC/DC**  
 170 A @ 35%  
 1 x 115 - 230 V  
 3 – 170 A  
 18.8 kg



**TERRA 220 RC**  
 220 A @ 30%  
 3 x 400 V  
 3 – 220 A  
 11.3 kg



**TERRA 270 RC**  
 270 A @ 40%  
 3 x 400 V  
 3 – 270 A  
 16.1 kg



**TERRA 350 RC**  
 350 A @ 40%  
 3 x 400 V  
 3 – 350 A  
 16.5 kg

MMA



**URANOS 1500 /1500 RC**  
 150 A @ 30%  
 1 x 230 V  
 5 – 150 A  
 2.6 kg

# FOR THE HIGHEST DEMANDS

Efficiency & technological excellence



## URANOS 2700 SMC

270 A @ 45%  
3 x 230 - 400 V  
3 – 270 A  
23.0 kg



## URANOS 3200 PME

320 A @ 50%  
3 x 230 - 400 V  
3 – 320 A  
27.6 kg



## URANOS 4000 PME

400 A @ 60%  
3 x 230 - 400 V  
3 – 400 A  
36.2 kg



## URANOS 5000 PME

500 A @ 50%  
3 x 230 - 400 V  
3 – 500 A  
38.5 kg



## URANOS 3200 GSM

320 A @ 50%  
3 x 230 - 400 V  
3 – 320 A  
27.6 kg



## URANOS 4000 GSM

400 A @ 60%  
3 x 230 - 400 V  
3 – 400 A  
37.5 kg



## URANOS 5000 GSM

500 A @ 50%  
3 x 230 - 400 V  
3 – 500 A  
39.5 kg

## URANOS 2200 AC/DC

220 A @ 35%  
1 x 115 - 230 V  
3 – 220 A  
18.8 kg



## URANOS 2700 AC/DC

270 A @ 40%  
3 x 230 - 400V  
3 – 270 A  
27.0 kg



## URANOS 3200 AC/DC

320 A @ 40%  
3 x 230 - 400 V  
3 – 320 A  
27.5 kg

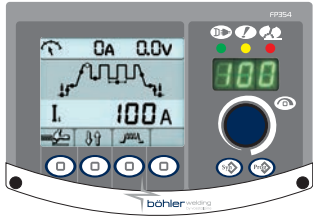


## URANOS 4000 AC/DC

400 A @ 40%  
3 x 230 - 400 V  
3 – 400 A  
35.4 kg

# URANOS – FOR THE HIGHEST DEMANDS

## Efficiency & technological excellence



### IPANEL

URANOS devices are equipped with the new iPanel as standard. The large (3.5" or 4.7") and clear graphic display offers a unique, user-friendly working interface.



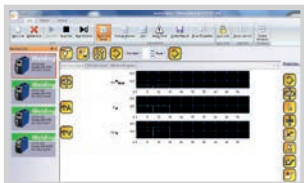
### ROBOT READY

URANOS welding machines are pre-equipped for automated and robotic applications and are therefore predestined for efficient high-performance welding. URANOS devices are equipped with all hardware and software components necessary for this.



### EFFICIENT WELDING

Saving energy - increasing efficiency  
URANOS machines are equipped with the patented green@wave® technology. This technology complies with the EN61000-3-12 standard and enables extremely energy-efficient operation with optimised power consumption, saving up to 35% energy compared to conventional welding equipment.



### WELD@NET® SYSTEM

Thanks to the exclusive Weld@net® Production Control Monitor software, you can conveniently control several devices simultaneously via your PC and also display and set all welding parameters. With Weld@net® PCM, you can also calculate the quality and productivity of automatic or manual welding systems through sophisticated system and controlling reporting.



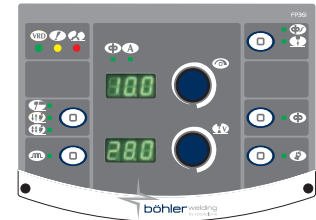


# TERRA – FOR STANDARD WELDING TASKS

## Robust and user-friendly

TERRA welding machines from Böhler Welding are available for MMA welding, TIG DC and MIG/MAG processes. The compact and robust design of the machines allows them to be used in a wide variety of working environments, even in confined spaces.

TERRA welding machines from Böhler Welding thrive under heavy use and guarantee durable connections.



### What TERRA welding machines are all about:

- » Simple operation for the welder
- » Low weight
- » Ideal for steel and stainless steel
- » Flexibly deployable
- » Suitable for use on construction sites and fabrication shops





# JOIN! voestalpine Böhler Welding

With over 100 years of experience, voestalpine Böhler Welding is the global leader for the daily challenges in the areas of joint welding, repair, hardfacing and cladding as well as brazing. Customer proximity is guaranteed by more than 43 branches in 25 countries, with the support of 2,300 employees, and through more than 2,000 distribution partners worldwide. With individual consultation by our application technicians and welding engineers, we make sure that our customers master the most demanding welding challenges. voestalpine Böhler Welding offers three specialised and dedicated brands to meet our customers' and partners' requirements.



**Lasting Connections** – As a pioneer for innovative welding consumables, Böhler Welding offers a unique product portfolio for joint welding worldwide. More than 2,000 products are being adapted continuously to the current industry specifications and customer requirements, certified by well-respected institutes and thus approved for the most demanding welding applications. "Lasting Connections" is the brand philosophy, both for welding and on a human level - always a reliable partner for the customer.



**Tailor-Made Protectivity™** – UTP Maintenance guarantees an optimal combination of protection and productivity with innovative and tailor-made solutions. Everything revolves around the customer and their individual requirements. That is expressed in the central performance promise: Tailor-Made Protectivity™.



**In-Depth Know-How** – As a leading brand of solder additives, Fontargen Brazing offers proven solutions that draw on 50 years of industry experience, proven processes and procedures. This In-Depth Know-How has made Fontargen Brazing an internationally preferred partner for every soldering and brazing task.

The Management System of voestalpine Böhler Welding Group GmbH, Peter-Mueller-Strasse 14-14a, 40469 Duesseldorf, Germany has been approved by Lloyd's Register Quality Assurance to: ISO 9001:2015, ISO 14001:2015, OHSAS 18001:2007, applicable to: Development, Manufacturing and Supply of Welding and Brazing Consumables. More information: [www.voestalpine.com/welding](http://www.voestalpine.com/welding)



